

## Instruction Manual

### TECHNICAL SPECIFICATION

Model Number	F31300RC	F31400RC	F31500RC	F31600RC	F31700RC	F31700RCv1	F53700RC	F53800RC	F53800RCv1
Wattage(W)	28	35	43	35	33	51	43	33	51
Input Constant Current	700mA	1400mA	1400mA	1400mA	900mA	1400mA	1400mA	900mA	1400mA
Nominal Voltage	37-43VDC	23-27VDC	29-33VDC	23-27VDC	33-40VDC	33-40VDC	29-33VDC	33-40VDC	33-40VDC
Dimension(mm)	L595 x W595 x H10	L595 x W595 x H10	L595 x W595 x H10	L1195 x W295 x H10	L1195 x W595 x H10	L595 x W1195 x H10	L595 x W595 x H10	L1195 x W595 x H10	L1195 x W595 x H10
IP Rating	IP20	IP20	IP20	IP20	IP20	IP20	IP20	IP20	IP20

### MEGAMAN LED Driver

Model Number	LA11015	LA11017	LA11019	LA11021	LA11022	LA11048	LA11049	LA11050
Input								
Uin(V)	100-240~	100-240~	100-240~	220-240~	100-240~	220-240~	220-240~	220-240~
F(Hz)	50/60	50/60	50/60	50/60	50/60	50/60	50/60	50/60
I(mA)	600(100VAC~) 300(220VAC~)	600(100VAC~) 300(220VAC~)	800(100VAC~) 400(220VAC~)	470	900(100VAC~) 420(220VAC~)	320	390	240
λ	>0.9	>0.9	>0.9	>0.9	>0.9	>0.9	>0.9	>0.9
Ta	-40°C~+70°C	-40°C~+70°C	-40°C~+70°C	-10°C~+50°C	-40°C~+70°C	-10°C~+50°C	-10°C~+50°C	-10°C~+50°C
Tc	+90°C	+90°C	+90°C	+85°C	+90°C	+85°C	+85°C	+85°C
Output								
Vout(V)	28-56VDC	15-30VDC	19-37VDC	28-43VDC	27-54VDC	17.5-29VDC	21.5-36VDC	25.5-43VDC
I(mA)	700	1400	1400	1400	1400	1400	1400	700
Dimming Format	0-10V	0-10V	0-10V	Non-dimmable	0-10V	Non-dimmable	Non-dimmable	Non-dimmable
LED Panel Supported	F31300RC	F31400RC F31600RC	F31500RC F53700RC	F31700RCv1 F53800RCv1	F31700RCv1 F53800RCv1	F31400RC F31600RC	F31500RC F53700RC	F31300RC

### CAUTIONS

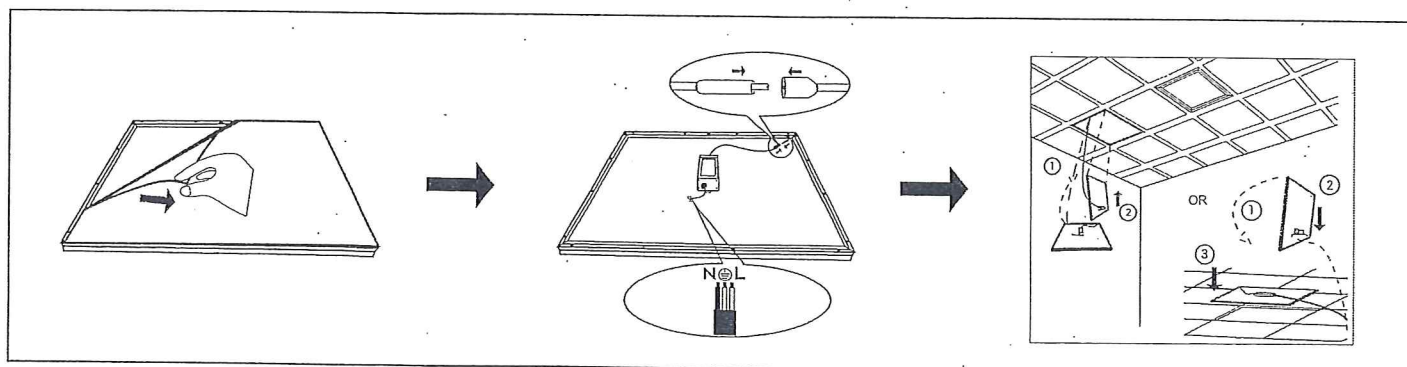
- Read the entire manual carefully before installation and operation.
- It is recommended that the installation or maintenance be performed by a licensed and qualified electrician.
- Switch off the power source and allow it cool down before installation, replacement and cleaning.
- Wearing gloves during installation replacement and cleaning is suggested for keeping MEGAMAN® BERTO in the best condition.
- In case the external flexible power cord is damaged, the luminaire should be destroyed.
- The luminaire is not suitable for covering with thermally insulated material.
- The minimum safety distance from the illuminated object is 0.1m.
- Dimming feature of 1-100% is achievable when working with the DC 1-10V dimming driver and the DC 1-10V dimmer. (Certain dimmer switches are equipped with a potentiometer, a small device to fine tune the resistance of the dimmer switch to obtain the optimal minimum light output of the MEGAMAN® BERTO)
- The MEGAMAN® BERTO is only compatible with a constant current type of LED Electronic Driver with Safety Extra-Low Voltage (SELV) output.
- MEGAMAN® BERTO are class III luminaire. When MEGAMAN® BERTO are connected with converters, it is considered as class II luminaire.
- The manufacturer accepts no liability for any damage resulting from the misuse of the MEGAMAN® BERTO or from when it is used with inappropriate equipment.
- Consult your dealer if you have any enquiries.

### ATTENTION

- Instant start is allowed.
- Designed for indoor application.
- Recommended operating temperature of the MEGAMAN® BERTO is -30°C to +40°C.
- The declared lumen output is the measurement of MEGAMAN® BERTO working with an appointed LED electronic driver under standardised laboratory condition.

- Release the screw when you insert or release the wire in or from the terminal
- Use solid copper wire of 18 AWG (minimum) for the input terminal, and 18 AWG (minimum) for the output terminal.
- 8 mm strip length of wire insulation.

## Installation



### TYPE OF CONNECTION

#### PRI

- L Brown
- Yellow/Green
- N Blue

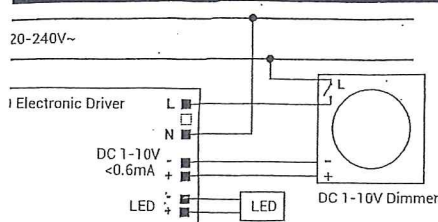
Cross-sectional area = 0.75 - 1.5mm<sup>2</sup> (18#AWG)

Flat cable is recommended

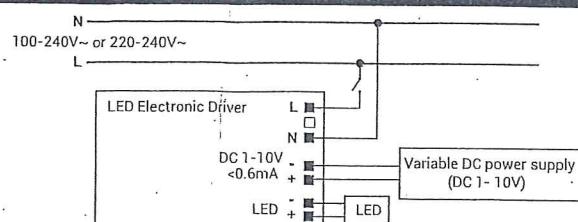
#### SEC

- Green D+
- White D-
- Red V+
- Black V-

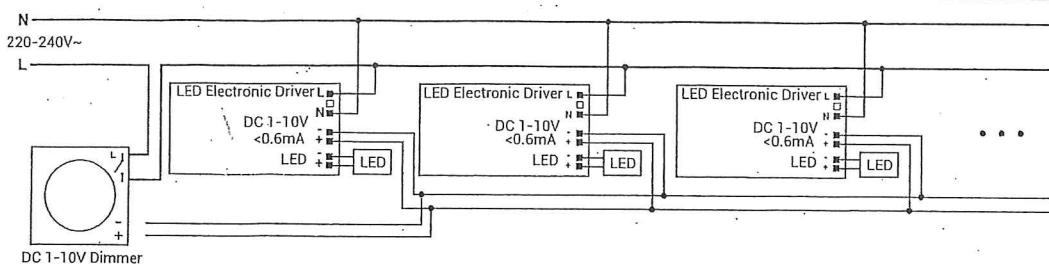
Connecting LED Electronic Driver with DC 1-10V Dimmer.



Wiring diagram for connecting LED Electronic Driver with variable DC power supply (DC 1-10V).



Connecting multiple LED Electronic Drivers with a DC 1-10V Dimmer.



Performance can vary between different brands and designs of DC 1-10V dimmers in the market. In this effect, we recommend that the maximum number of LED Electronic Drivers connected to the DC 1-10V dimmer should not exceed 15 pieces.

#### This Product

that this product should not be disposed with other household wastes to prevent possible harm to the environment or human health from disposal, recycle it responsibly to promote the sustainable reuse of material in used device, please use the return and collection systems or contact the retailer where the product was purchased. They can take this product for environmental safe disposal.

